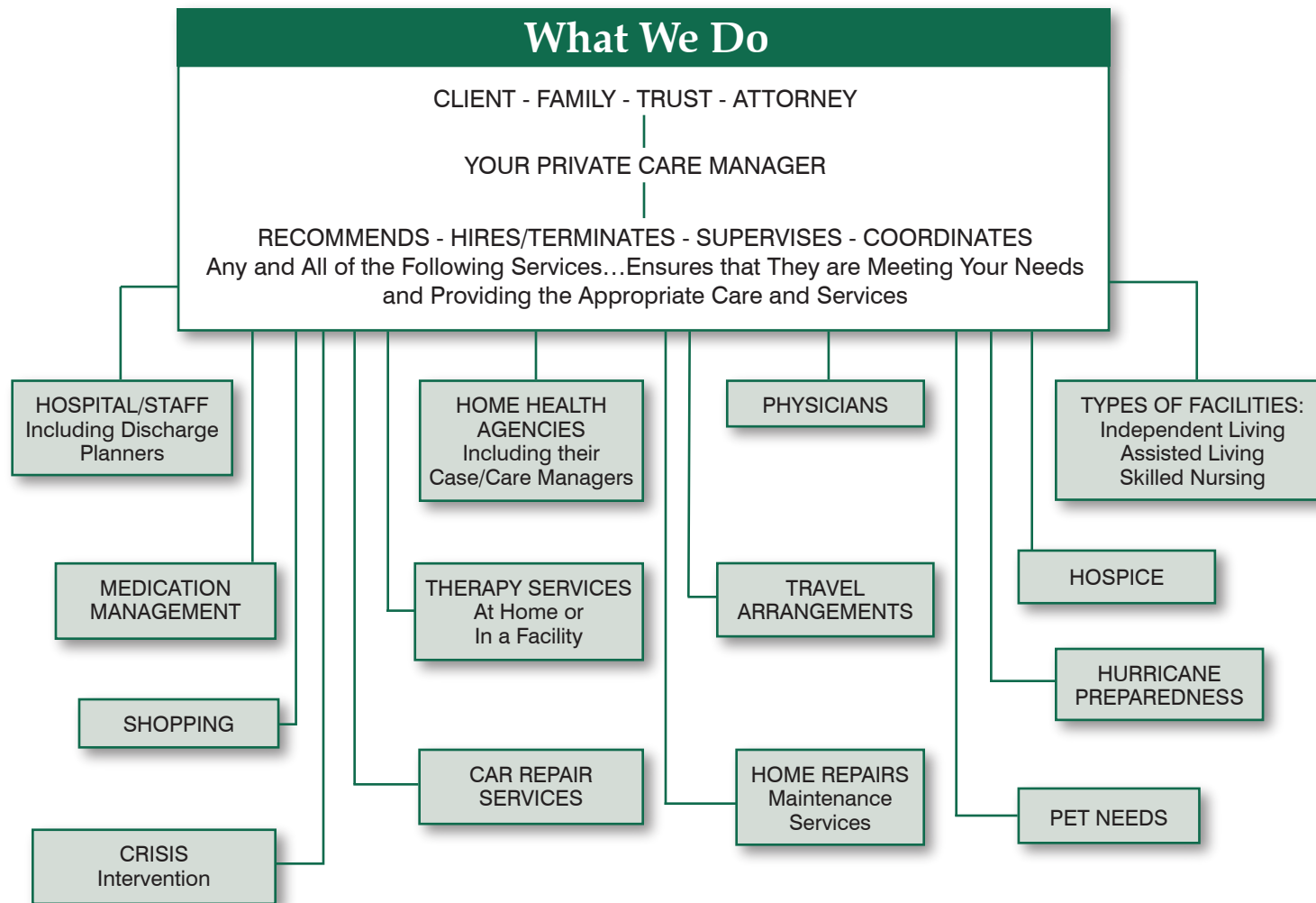


# Parental Care Consultants

## Geriatric Care Management



**In most cases, time is of the essence. We can provide you with all the information from the start so you and your family can make the appropriate decisions for care needs. If you think you or a loved one could benefit from any of these services, please call us today.**

**Ph: 561-799-2755 • Fax: 561-630-6947**

[www.parentalcareconsultants.com](http://www.parentalcareconsultants.com)